

Takizawa Dam -surrounded by the beautiful nature-



This brochure introduces the attractive points of Takizawa Dam, which is managed by Arakawa Dam Operation and Management Office, Japan Water Agency. The dam and its surroundings offer beautiful scenery with full of blessings of nature. Why don't you visit Takizawa Dam, explore the dam site and have a nice stroll along the dam?

1. General Information on the Ara River Basin

Takizawa Dam is located in the upstream of the Ara River which is classified as a 'Class A river' in Japan. The Ara River runs through the center of Tokyo, capital city of Japan, extending for 173km from the source of the river in Mt. Kobushigatake to the river mouth, with 2,940 km² of catchment area, serving water for a population of approximately 9.8 million in the basin. The total capital of the basin reaches 188 trillion yen (one third of the total capital of Kanto region). Now, beneficiaries of the tap water from the river exceeded 10 million people.

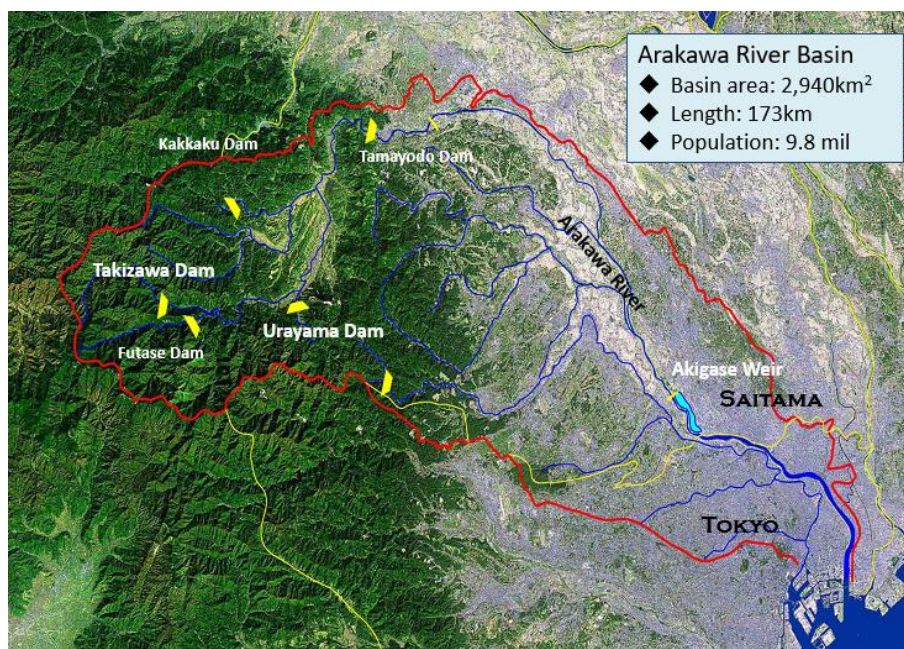


Figure1. Map of the Ara River Basin

Historically, the river has sometimes brought serious flood damage and caused serious impact on socio-economic infrastructure, especially local residents. Therefore, the successive governments had conducted the large scale flood prevention works and changed the main stream of the river. Especially, mainstream of the river course in the downstream had drastically been changed for flood control between 1911 and 1930. Thanks to these efforts, flood damage in the downstream area of the Ara River has drastically lowered, and key functions of the capital city of Japan has been secured.

On the other hand, the river had sometimes experienced the serious droughts, causing huge amount of economic damage. To cope with these complex and serious issues on water, many counter-measures for river improvement such as construction of dams and development of river dykes have been implemented. That is why we don't see serious flood or drought issues in the river basin now.

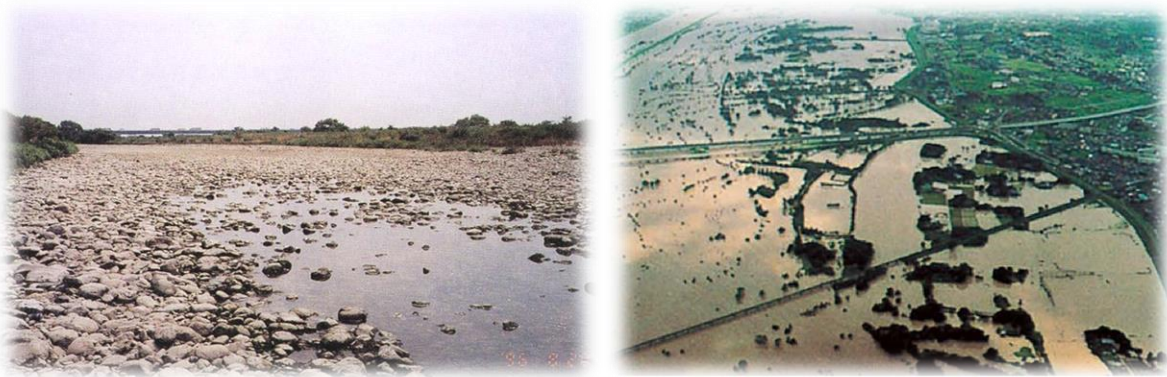


Photo 1 : Situation of the interruption of river flow and flood of the middle reach of the Ara River

However, rainfall pattern has changed due to the recent climate change. Heavy rainfall in Eastern Japan caused by Typhoon No.19, of October 2019 brought huge amount of economic loss and loss of human life, and the Ara River experienced record rainfall in the river basin.

Furthermore, according to an estimate by the Ministry of Land, Infrastructure, Transport and Tourism (MLIT), economic damage caused by the collapse of the dyke of the Ara River could become at least 22 trillion yen. In this way, the Ara River management could give a big impact on the Japanese economy.

2. Purpose and legend of Takizawa Dam

The dam was constructed by the Japan Water Agency based on the River Law, the Water Resources Development Promotion Law and the Japan Water Agency Act. The construction project completed in FY2007, and operation of the dam started in FY2008. Basic legend of the dam is, as follows:

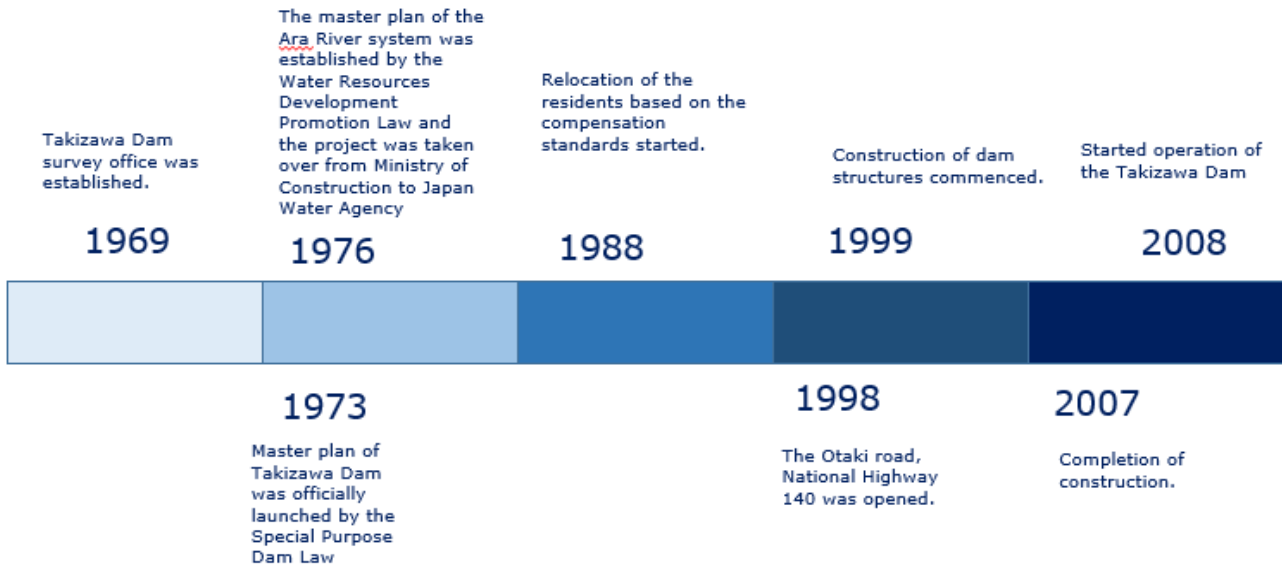


Figure2 : History of the Takizawa Dam construction

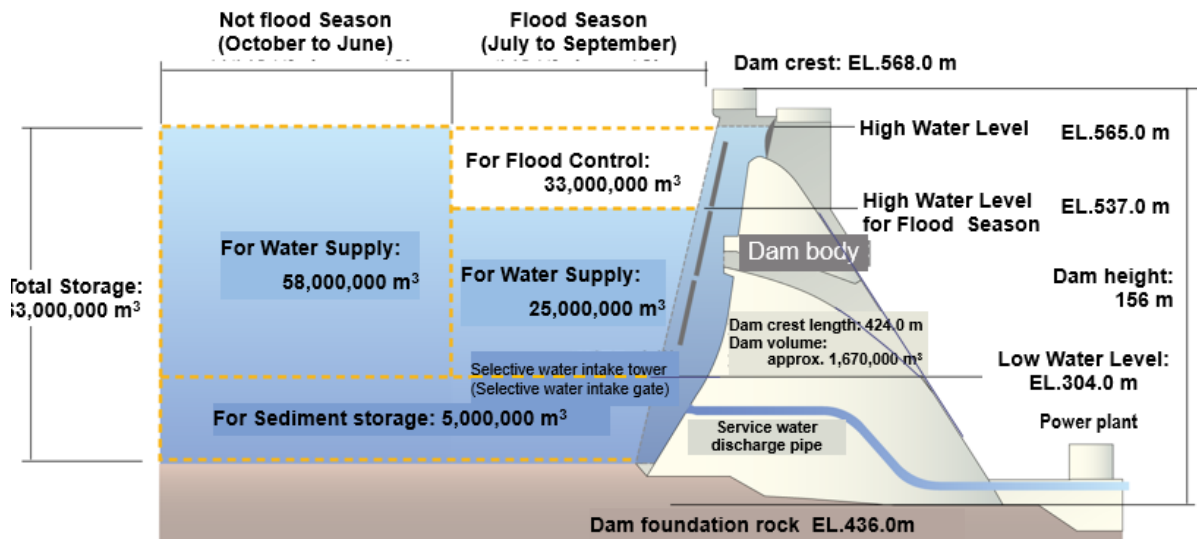


Figure 3 : Specification of the Takizawa Dam (Allocation of amount of reservoir)

Objectives of the Takizawa Dam	
Flood Control	Storage flood water to the reservoir and reduce the amount of discharge to downstream (1,850 m ³ /s to 300 m ³ /s).
Stable water supply of the irrigation and preservation of the river environment	Ensuring the sufficient and stable water supply for irrigation use and preservation of the original river

	environment by supplying necessity water from the reservoir.
Development of municipal water	Storage water for municipal use for Tokyo Metropolitan and Saitama Prefecture(4.6 m ³ /s).
Hydropower	Generate max 5,000kw/h

Figure 4 : Objectives of the Takizawa Dam

3. How was the dam constructed?

The dam was constructed by using streamlined construction methods such as RCD (Roller Compacted Dam-Concrete) method and ELCM (Extended Layer Construction Method). As a result, shorter construction period and the lower construction cost were achieved to meet with such feats, the dam construction project was awarded for streamlined construction method for the large scale concrete dam construction and designing and creation of good scenery from the Japan Society of Civil Engineers.



Photo 4 : Photo of the control stage of the Takizawa Dam

One of the unique features of Takizawa Dam is the replacement road of the dam, which was constructed to fill the gap of 125m in height between the end of the original road and that of the newly raised road. The bridge is named as 'Raiden-Todoroki-Bashi' which is the replacement road combined with the loop bridge. As its loop shape created a new and matched environment to the scenery, it was awarded by the Japan Society of Civil Engineers and the Japan Institute of Design Promotion.

In this way, the dam and the replacement road have made new sightseeing resources in Chichibu area, and dedicated to the increase of tourists to the region, inviting more visitors to take photos of the dam and the bridge, especially on holidays.

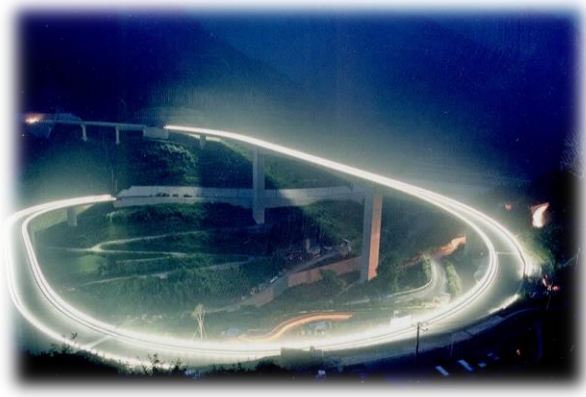


Photo 4 : Photo of the Raisen-Todoroki-Bashi Bridge and Takizawa Dam

4. Surrounded by the blessings of nature

The dam is located in the middle of the Chiuchibu-Okutama-Kai National Park, and biodiversity is well conserved. To maximize this rich nature being intact, the nature-friendly construction method was applied for this dam, following the necessary laws and regulations. Field surveys of raptors have been and are still conducted now, and we're monitoring the transition of the nature carefully.



Photo 5 : Construction by considering the original nature and eco-friendly method



Photo 6 : Beautiful scenery around the reservoir

5. Recommendations to enjoy Takizawa Dam

The reservoir of Takizawa Dam is named as 'Oku-Chichibu Fall Foliage Lake' named after the surrounded environment such as beautiful autumn foliage of mountains. In late autumn, many autumn foliage seekers, head for the various famous autumn foliage sites around the dam especially during the 'Oku-Chichibu Fall Foliage Festival' season in early November.



Photo 7 : Beautiful scenery around the reservoir

The dam was designated as one of the dams open to the local residents, so local people and tourists as well can go enter the dam body without admittance. An elevator is installed for easy access to the downstream side from the top of the dam, and you can feel a large scale of the dam by looking up the dam. Especially, you can catch a spectacular view of the dam with discharging water from suspended bridge. Visitors can also use 435 steps to reach the top of the dam from the bottom.



Photo 8 : Corridor of the inside of dam body and 435 steps on dam body

Exhibition hall of Takizawa Dam named 'Lake View House' is located a couples of minutes by car from the management office. The exhibition hall on the 2nd floor offers visitors the opportunities to learn the dam operations. The 'Lake View House' serves as a reception desk for the BMX course which is an internationally approved bicycle motocross course, and visitors can enjoy BMX ride casually (charged).



Photo 9 : 'Lake View House', exhibition hall of the Takizawa Dam

6. Other recommended tourist destinations

There are many tourist destinations around the dam. The Mitsumine Shrine is one of the most famous shrines which offer spiritual energy in Kanto Plain, not far from Tokyo metropolitan area. It is located 30 minutes by car from the dam. The shrine is situated among the forests, and calm air quite often offers mysterious atmosphere. Visitors can stay at the shrine guest house or inns nearby and enjoy local dishes and hot spring there.

Nakatsugawa Ravine located on the upstream of the Takizawa Dam is well-known for autumn colors. In summer, many visitors go stream fishing and camping in the forests. In autumn many nature-lovers visit there and enjoy beautiful colored leaves especially on holidays. In winter, they can enjoy beautiful icicle formations near the dam.

5km away from the dam, there is a hot spring combined with the restaurant which serves local food. 'Perhaps you may have heard the Dam Curry and Rice, looking like the appearance of a local dam. The restaurant here offers Takizawa Dam Curry and Rice' (available at 800 yen.).



Photo10 : Mitsumine Shrine & Takizawa Dam Curry and Rice

Chichibu region where Takizawa Dam is located is also well noted for many local and indigenous festivals. It is said there are over 300 festivals held in a year. Above all, 'Chichibu Night Festival' which is held on 2 and 3 December every year is recognized as one of Japan's three grand float parade festivals. Approximately 200 thousand local people and tourists enjoy the float parade, fireworks and local food despite the chilly atmosphere as its climax comes at night.

In this way, there are many places to visit in all seasons in Chichibu where the Takizawa Dam is located.



Photo 11 : Chichibu Night Festival

7. Access to Takizawa Dam

A car ride is the easiest way to reach the dam. Rent a car at the Seibu Chichibu Station, approximately 80 minutes by train from Ikebukuro Station in central Tokyo. Take the National Highway route No. 140 toward Yamanashi Prefecture. In approximately 50 minutes, you can get to Takizawa Dam. On the way to the dam, you will be sure to have fun seeing the green trees and driving winding and comfortable road.